



THE ADMIRAL



THE ADMIRAL Model number: 35XTM18803AH19

3 beds • 2 baths • 1440 sq.ft. • 18' width • 80' depth

Our home building facilities invest in continuous product and process improvements. Plans, dimensions, features, materials, specifications and availability are subject to change without notice or obligation. Renderings and floor plans are representative likenesses of our homes and may differ from the actual homes. We invite you to tour a Home Center near you and inspect the highest value in quality housing available or call (870) 862-4300 to speak with a Home Consultant. Copyright 2017, CMH. All rights reserved.

<https://www.claytoneldorado.com>

CLAYTON HOMES-EL DORADO

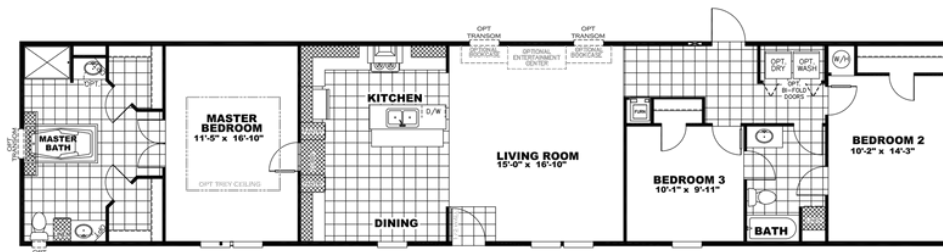
3655 JUNCTION CITY HWY
EL DORADO, AR 71730

Monday - Thursday: 9am - 7pm
Friday: 9am - 6pm
Saturday: 9am - 5pm
Sunday: Closed

(870) 862-4300



THE ADMIRAL



THE ADMIRAL Model number: 35XTM18803AH19

3 beds • 2 baths • 1440 sq.ft. • 18' width • 80' depth

Our home building facilities invest in continuous product and process improvements. Plans, dimensions, features, materials, specifications and availability are subject to change without notice or obligation. Renderings and floor plans are representative likenesses of our homes and may differ from the actual homes. We invite you to tour a Home Center near you and inspect the highest value in quality housing available or call (870) 862-4300 to speak with a Home Consultant. Copyright 2017, CMH. All rights reserved.

<https://www.claytoneldorado.com>

CLAYTON HOMES-EL DORADO

3655 JUNCTION CITY HWY
EL DORADO, AR 71730

Monday - Thursday: 9am - 7pm
Friday: 9am - 6pm
Saturday: 9am - 5pm
Sunday: Closed

(870) 862-4300